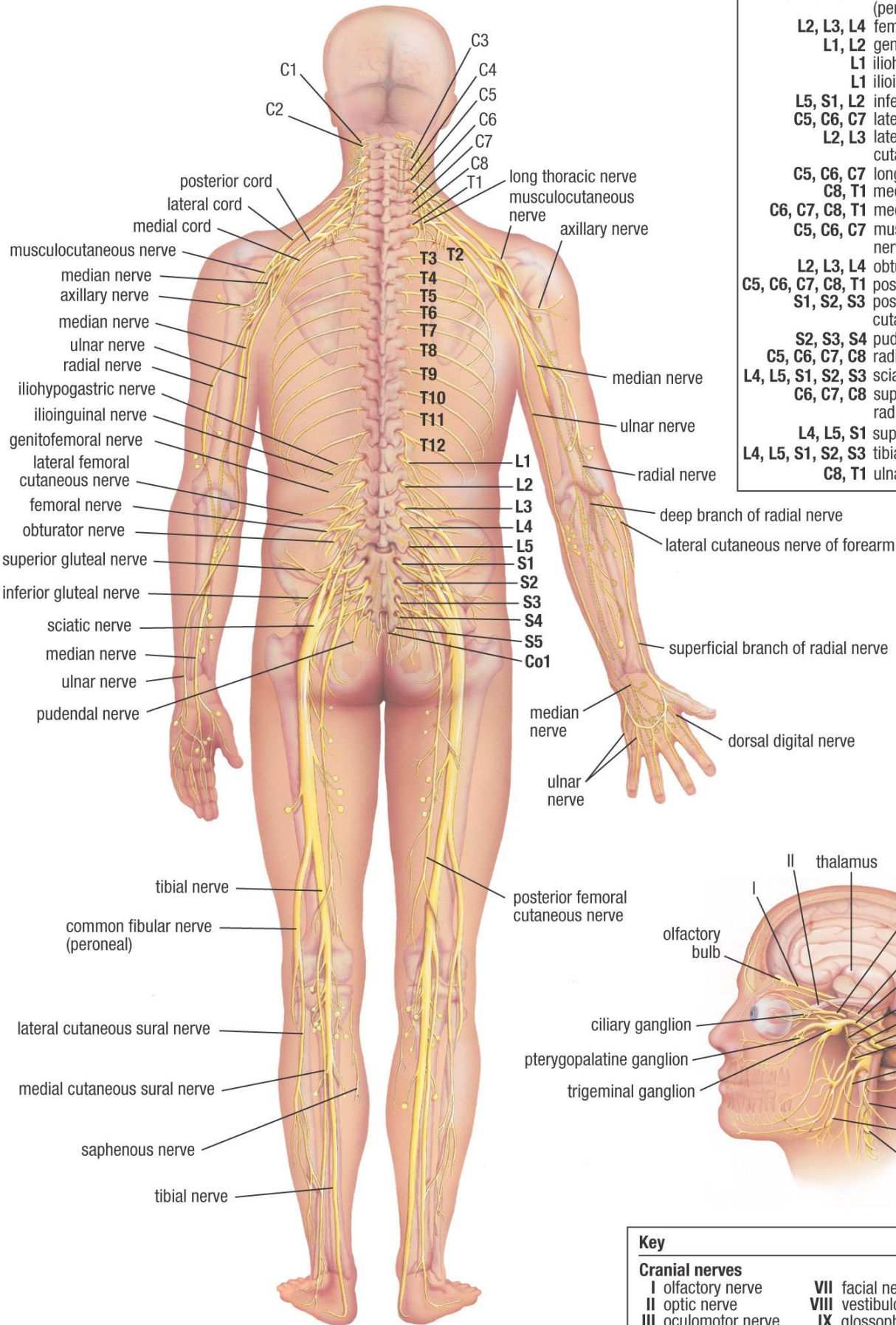
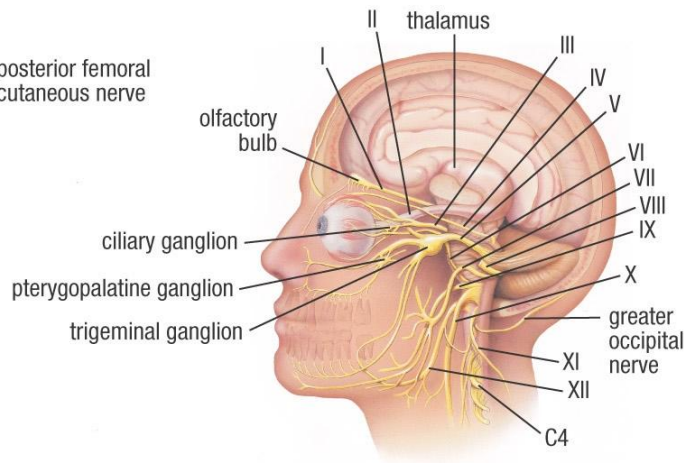


# SPINAL AND CRANIAL NERVES



Key	
<b>Peripheral nerve origins</b>	
C5, C6	axillary nerve
L4, L5, S1, S2	common fibular (peroneal) nerve
L2, L3, L4	femoral nerve
L1, L2	genitofemoral nerve
L1	iliohypogastric nerve
L1	ilioinguinal nerve
L5, S1, L2	inferior gluteal nerve
C5, C6, C7	lateral cord
L2, L3	lateral femoral cutaneous nerve
C5, C6, C7	long thoracic nerve
C8, T1	medial cord
C6, C7, C8, T1	median nerve
C5, C6, C7	musculocutaneous nerve
L2, L3, L4	obturator nerve
C5, C6, C7, C8, T1	posterior cord
S1, S2, S3	posterior femoral cutaneous nerve
S2, S3, S4	pudendal nerve
C5, C6, C7, C8	radial nerve
L4, L5, S1, S2, S3	sciatic nerve
C6, C7, C8	superficial branch of radial nerve
L4, L5, S1	superior gluteal nerve
L4, L5, S1, S2, S3	tibial nerve
C8, T1	ulnar nerve



Key	
<b>Cranial nerves</b>	
I	olfactory nerve
II	optic nerve
III	oculomotor nerve
IV	trochlear nerve
V	trigeminal nerve
VI	abducens nerve
VII	facial nerve
VIII	vestibulocochlear nerve
IX	glossopharyngeal nerve
X	vagus nerve
XI	accessory nerve
XII	hypoglossal nerve